

THE ABOVE AND BEYOND COLLECTION



ABOVE & BEYOND



DESIGNED TO ENDURE

The new Land Rover Defender goes above and beyond. And now there's a collection to match. A collaboration between Land Rover and Musto that's rugged and innovative, it's designed to take you anywhere and take on anything. Made from strong and resilient materials. Crafted with technical precision. And tested in real-world conditions. It's what endurance is made of.

RODINIA HYBRID JACKET

SHIELDS

Showerproof and versatile, this softshell jacket is a defence against the elements. Designed with quick burst zip technology that allows you to remove the sleeves in a single movement, turning it from jacket to gilet in seconds. Featuring fast-drying DWR® treated fabric and PrimaLoft® eco-insulation for compressible warmth.

MEN'S RODINIA HYBRID JACKET
Black - £295.00

XS	51LGJM371BKB	XL	51LGJM371BKF
S	51LGJM371BKC	XXL	51LGJM371BKG
M	51LGJM371BKD	XXXL	51LGJM371BKH
L	51LGJM371BKE		



Reflective prints feature glass bead technology.



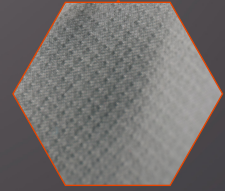
Reverse coil, bi-colour YKK zip.



Quick burst zips for easy sleeve removal.



Durable Water Repellent (DWR®) coating.



Constructed from ultra-resistant Schoeller® stretch fabric.



Concealed pocket for sleeve stowage.



PrimaLoft® Black Eco recycled insulation.

WOMEN'S RODINIA HYBRID JACKET

Black - £295.00

8	51LGJW377BKI	14	51LGJW377BKL
10	51LGJW377BKJ	16	51LGJW377BKM
12	51LGJW377BKK	18	51LGJW377BKN



MEN'S & WOMEN'S JACKET FEATURES

- Constructed from abrasion-proof Schoeller® stretch fabric.
- Durable Water Repellent (DWR®) coating allows water to bead and run off for faster drying times.
- PrimaLoft® Black Eco recycled insulation for eco-friendly, lightweight and compressible warmth.
- Ergonomic YKK zip with reverse coil construction.
- Reflective prints feature glass bead technology for enhanced visibility.
- Quick burst zip technology transforms jacket into gilet.
- Concealed pocket for stowing removable sleeves.





TEPHRA GORE-TEX SHELL PARKA

Endure the extremes. The tech packed, triple-layer parka is the ultimate protective garment. Featuring a precision-engineered construction that provides superlative wind and waterproof performance.



MEN'S TEPHRA GORE-TEX SHELL PARKA

MEN'S TEPHRA GORE-TEX SHELL PARKA Black - £350.00

XS	51LGM368BKB	XL	51LGM368BKF
S	51LGM368BKC	XXL	51LGM368BKG
M	51LGM368BKD	XXXL	51LGM368BKH
L	51LGM368BKE		



WOMEN'S TEPHRA GORE-TEX SHELL PARKA

MEN'S & WOMEN'S JACKET FEATURES

- 3-layer GORE-TEX laminate provides superior weatherproofing and breathability.
- Durable Water Repellent (DWR®) coating.
- Water-resistant YKK zips with AquaGuard® (Coil).
- Embedded COHÆSIVE™ cord locks for easy, one-handed adjustment.
- Cargo pockets feature water deflecting top closures.
- Reflective prints feature glass bead technology for enhanced visibility.
- Two-way adjustable hood.

WOMEN'S TEPHRA GORE-TEX SHELL PARKA Black - £350.00

8	51LGJW374BKI	14	51LGJW374BKL
10	51LGJW374BKJ	16	51LGJW374BKM
12	51LGJW374BKK	18	51LGJW374BKN



WELDED THERMO JACKET

Insulation meets innovation in this ultrasonic Welded Thermo Jacket. Constructed with PrimaLoft® insulation fused with Aerogel for the performance of natural down. Seamless design. Unsurpassed comfort. And peerless durability in all terrains.



MEN'S WELDED THERMO JACKET

MEN'S WELDED THERMO JACKET Black - £350.00

XS	51LGM370BKB	XL	51LGM370BKF
S	51LGM370BKC	XXL	51LGM370BKG
M	51LGM370BKD	XXXL	51LGM370BKH
L	51LGM370BKE		

MEN'S & WOMEN'S JACKET FEATURES

- 3-layer waterproof shell fabric with polyester face.
- Equipped with a RECCO® integrated reflective antenna that helps rescue teams locate you in difficult terrain.
- PrimaLoft® Silver insulation provides warmth of natural down without the weight.
- PrimaLoft® Aerogel-lined pocket keeps mobile phones charged for longer.
- Embedded COHÆSIVE™ cord locks for easy, one-handed adjustment.
- Reflective prints feature glass bead technology for enhanced visibility.



WOMEN'S WELDED THERMO JACKET

WOMEN'S WELDED THERMO JACKET Black - £350.00

8	51LGJW376BK1	14	51LGJW376BKL
10	51LGJW376BKJ	16	51LGJW376BKM
12	51LGJW376BKK	18	51LGJW376BKN



LITE GORE-TEX PACKABLE JACKET

Feather-light. Fully stowable. This jacket is made from highly breathable GORE-TEX fabric. An articulated construction with fully-taped seams, it ensures superior waterproof protection. A form-fitting jacket for high-intensity activities.



MEN'S LITE GORE-TEX
PACKABLE JACKET

**MEN'S LITE GORE-TEX
PACKABLE JACKET**
Black - £225.00

XS	51LGM369BKB	XL	51LGM369BKF
S	51LGM369BKC	XXL	51LGM369BKG
M	51LGM369BKD	XXXL	51LGM369BKH
L	51LGM369BKE		



MEN'S & WOMEN'S JACKET FEATURES

- Constructed from ultra-breathable GORE-TEX Active fabric.
- Fully waterproof with taped seams.
- Packs away into pocket for easy attachment to belt loops and bags.
- Reflective prints feature glass bead technology for enhanced visibility.
- Durable Water Repellent (DWR®) coating.
- Embedded COHÆSIVE™ cord lock for easy adjustment.



WOMEN'S LITE GORE-TEX
PACKABLE JACKET

**WOMEN'S LITE GORE-TEX
PACKABLE JACKET**
Black - £225.00

8	51LGJW375BKJ	14	51LGJW375BKL
10	51LGJW375BKJ	16	51LGJW375BKM
12	51LGJW375BKK	18	51LGJW375BKN



REVERSIBLE BASE LAYER

A Reversible Base Layer that adapts to the seasons. Made with thermal regulating merino fabric on one side and breathable polyester fabric on the other. Featuring flatlocked seams with black reflective prints and glass bead technology for enhanced low-light visibility.



MEN'S REVERSIBLE
BASE LAYER

MEN'S REVERSIBLE BASE LAYER Grey - £75.00

XS	51LGTM373GYB	XL	51LGTM373GYF
S	51LGTM373GYC	XXL	51LGTM373GYG
M	51LGTM373GYD	XXXL	51LGTM373GYH
L	51LGTM373GYE		



MEN'S & WOMEN'S BASE LAYER FEATURES

- Merino fabric provides thermal regulation, wicking and anti-odour properties.
- Reverse side features polyester fabric that's breathable, wicking and fast-drying.
- UPF 30 sun protection.
- Reflective prints feature glass bead technology for enhanced visibility.
- Water-resistant pocket for phone.



WOMEN'S REVERSIBLE
BASE LAYER

WOMEN'S REVERSIBLE BASE LAYER Black - £75.00

8	51LGTW379BKI	14	51LGTW379BKL
10	51LGTW379BKJ	16	51LGTW379BKM
12	51LGTW379BKK	18	51LGTW379BKN

ABOVE AND BEYOND
FUNCTIONAL ACTIVITY BELT

SECURES

Rugged, reliable and remarkably strong.

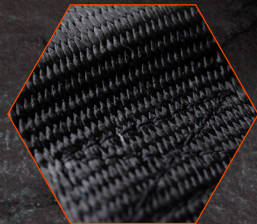
Featuring an ultra-robust webbing construction with a tensile strength of 6000kg. Fitted with a hard-wearing HYPALON™ stopper. And secured with the world's safest and strongest ANSI COBRA® buckle. A belt that goes beyond the call of duty when you have to.

ABOVE AND BEYOND
FUNCTIONAL ACTIVITY BELT
Black - £85.00

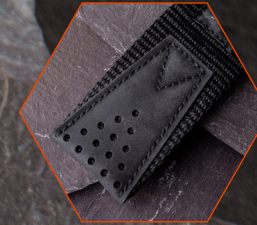
S/M 51LGGF382BK4
L/XL 51LGGF382BK6



Features an ANSI COBRA® buckle: the world's safest and strongest buckle.



Ultra-robust webbing construction.



HYPALON™ stopper for heavy-duty outdoor use.

WIDTH
38mm

WEBBING TENSILE STRENGTH
6000kg

SECURED BY AN
ANSI COBRA®
BUCKLE



MIROVIA SEAM SEALED BACKPACK

HAULS

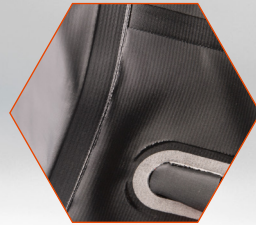
The go-anywhere, take-anything backpack. Constructed from 500D PVC material chosen for its uncompromising quality and significant strength. Designed with a large roll-top and heat-sealed seams to keep moisture out. Complete with HYPALON™ lashing points and a release valve for compact packing.

FEATURES

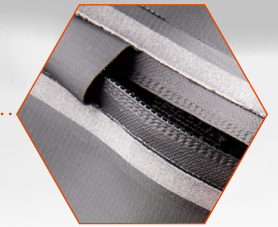
- 500D PVC material and heat-sealed seams defend contents against water damage.
- 25 litre main compartment with computer pocket for safer storage.
- Exterior features HYPALON™ lashing points.
- Finished with reflective print for superior visibility.
- Hard-wearing valve releases pressure for compact packing.

MIROVIA SEAM SEALED BACKPACK
Black - £115.00

51LGLU385BKA



Features robust 500D PVC material and heat-sealed seams.



25 litre main compartment with computer pocket.



Stitched HYPALON™ lashing points.



Integrated release valve aids compact packing.





ABOVE AND BEYOND FLASK

SUSTAINS

This robust, double-walled steel flask keeps liquids cold for up to 24 hours and hot for up to 15 hours. Featuring an easy-grip design that can be held with gloves. Durable and rugged with a nylon cord for easy attachment.

ABOVE AND BEYOND FLASK

Black - £35.00

51LGGF393BKA

KEEPS LIQUIDS COLD FOR UP TO

24hrs

KEEPS LIQUIDS HOT FOR UP TO

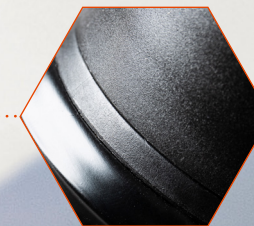
15hrs

CAPACITY

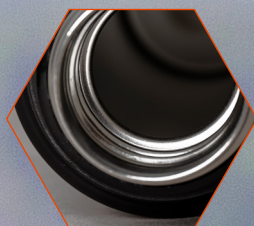
500ml



Features easy-pour lid with removable drinking cup.



Waterproof seals for secure transportation of liquids.



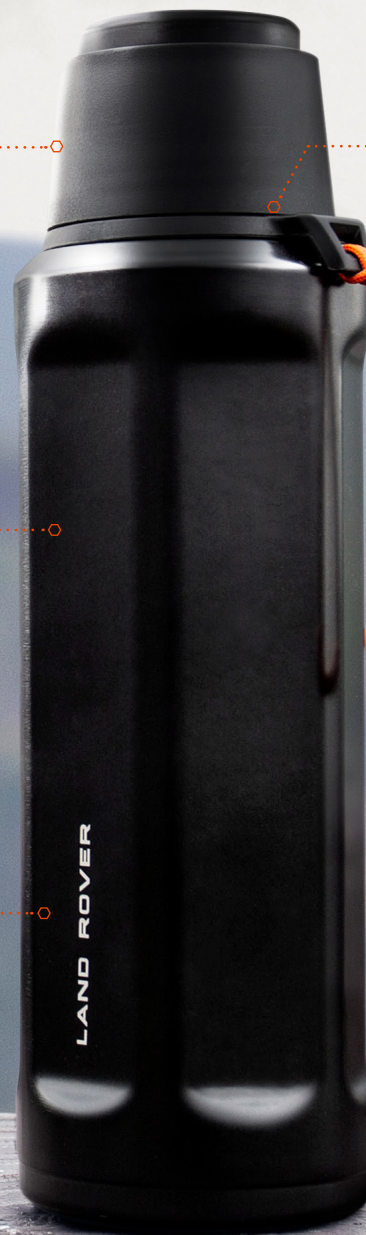
Double-walled steel flask means liquid maintains its temperature for longer.



Nylon cord for easy attachment.



Ergonomic barrel designed for superior grip.



LEROVA TRAVEL WALLET

This durable travel wallet is built to safeguard your essentials from the elements. 23cm x 3cm x 12cm.

FEATURES

- Rugged, water-resistant construction.
- Protects your items from water damage.
- Attaches to bags and belt loops with hard-wearing carabiner.

LEROVA TRAVEL WALLET Black - £40.00

51LGLU383BKA



ABOVE AND BEYOND WATER BOTTLE

A technical water bottle with easy-grip exterior. Constructed from Borosilicate glass that is resistant to thermal shock, it can be easily attached to travel bags. Super durable and expedition friendly.

FEATURES

- Silicone sleeve.
- Liquid volume marker.
- Watertight lid.
- Anti-slip base.

ABOVE AND BEYOND WATER BOTTLE Black - £30.00

51LGGF392BKA



ABOVE AND BEYOND BLUETOOTH SPEAKER

Waterproof. Travel-ready. This multi-function Bluetooth speaker is compact enough to take anywhere. And tough enough to take the knocks. 18cm x 5cm x 8cm.

FEATURES

- Reinforced portable construction.
- Impact resistant and dustproof.
- Carabiner attaches to bags.
- NFC pairing. USB charging.
- Doubles as power bank and mobile speakerphone.
- 12 hour battery.
- Waterproof to 1 metre IP67.



Hooks on to bag with a carabiner.

ABOVE AND BEYOND BLUETOOTH SPEAKER Black - £80.00

51LGGF395BKA



ABOVE AND BEYOND CAP

Enhanced breathability and low-light visibility. This quick-drying cap is designed to keep you comfortable, and put your performance first come rain or shine.

FEATURES

- UPF 40 sun protection.
- Open mesh side panels.
- 3M reflective accents and branding.
- Quick-dry fabrics and ventilation.
- Reflective print to the rear.

ABOVE AND BEYOND CAP
Black - £30.00

51L6CH380BKA



ABOVE AND BEYOND MICROFIBRE ACTIVE TOWEL

Pack light. Stay dry. This branded microfibre active towel is made from a high-wicking polyester blend that's light, fast-drying and easy to store.

FEATURES

- High-wicking polyester blend.
- Branded print to one side and orange trim.
- Easy storage in a drawstring pouch.
- Unfolded Size: 110cm x 65cm.
- Folded Size: 16cm x 20cm.

ABOVE AND BEYOND MICROFIBRE ACTIVE TOWEL
Black - £30.00

51L6GF386BKA



ABOVE AND BEYOND MULTI TECH GLOVES

Dynamic movement. Resilient protection. These performance gloves are lightweight, versatile and can be easily adjusted for a tailored fit. Tested extensively by Land Rover Experience for a multitude of outdoor uses.

FEATURES

- Raised silicone print for enhanced grip.
- Hard-wearing construction.
- Conductive finger-pads for use on any touchscreen device.
- Breathable, anatomical comfort.
- Velcro adjuster on neoprene cuffs.

ABOVE AND BEYOND MULTI TECH GLOVES
Black - £55.00

S/M 51L6VM381BK4
L/XL 51L6VM381BK6



Conductive finger-pads work on touchscreens.





ABOVE AND BEYOND MULTI TOOL

Does everything. Goes anywhere. This handy tool has been designed for hard-wearing use both on and off road. Features 9 individual tools made from reinforced stainless steel.

FEATURES

- Spring-action pliers.
- Knife with safety lock.
- Bottle opener.
- Serrated blade.
- Phillips screwdriver.
- Can opener.

ABOVE AND BEYOND MULTI TOOL*

Orange - £40.00

51LGGF388BKA



ABOVE AND BEYOND TECHNICAL KEYRING

Pocket-sized and packed with tools. This all-in-one utility keyring is made from stainless steel and reinforced with a black aluminium cover. Small, sleek, but seriously useful.

FEATURES

- Pliers.
- Bottle opener built into cutter.
- Carabiner attaches to bags.
- Phillips screwdriver.
- Knife with safety lock.

ABOVE AND BEYOND TECHNICAL KEYRING*

Black - £30.00

51LGGF391BKA

*Minimum age limit applies.



ABOVE AND BEYOND FOLDING SHOVEL

A tool to travel with. The all-terrain shovel folds down into a portable size. Its sturdy construction and serrated edge make light work of the toughest tasks. Finished with laser engraved branding.

FEATURES

- Reinforced folding shovel designed for easy storage.
- Easy-grip.
- Dual edged for multi-purpose use.
- Rigid handle for leverage and durability.

ABOVE AND BEYOND FOLDING SHOVEL

Black - £30.00

51LGGF387BKA





ABOVE AND BEYOND PEN

ENDURES

Waterproof, freezeproof and heat-resistant. This pen has been engineered to go to extremes. Crafted from aircraft-grade aluminium with a 6-sided barrel and an ergonomic grip, it has the power to write underwater and keep working at temperatures of up to 250°F.

FEATURES

- T6 aircraft-grade aluminium. Resistant to extremes of heat and cold.
- Strong enough to withstand the weight of an off-road vehicle.
- Features hard anodized coating for durability and shockproof rubber end caps.
- Includes branded cylinder and display stand.
- Capable of writing underwater, through grease and even in space.

ABOVE AND BEYOND PEN

Gunmetal - £150.00

51LFPN377GUA



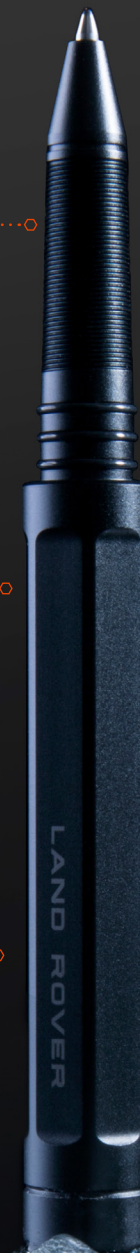
Hard anodized coating for enhanced durability.



Engineered for superior strength.



Resistant to extremes of heat and cold.



WEIGHT
44g

HEIGHT
140mm

HEAT RESISTANT UP TO
+250°F



Features branded cylinder and display stand.





LEGO® TECHNIC™ LAND ROVER DEFENDER 90

INSPIRES

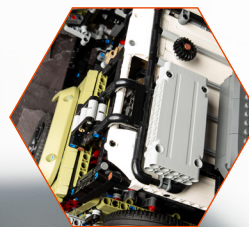
Iconic. Authentic. Experience legendary vehicle design first hand with this LEGO® Technic™ Land Rover Defender. Developed in partnership with LEGO®. Suitable for age 11+. 2,573 pieces. Measures over 8" (22cm) high, 16" (42cm) long and 7" (20cm) wide.

LEGO® TECHNIC™ LAND ROVER DEFENDER 90

Green - £159.99

51LGGF397MXA

TO PURCHASE VISIT SHOP.LANDROVER.COM/UK



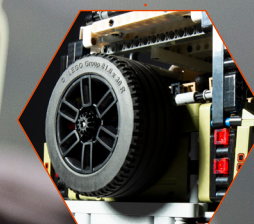
Bodywork features Land Rover logo, removable roof rack with storage box, pannier, ladder and traction mats, opening doors, hood and tailgate, plus a detailed interior.



Lift the bonnet to see the detailed in-line 6-cylinder engine with moving pistons.



Functions include working steering, All Wheel Drive with 3 differentials, independent suspension on both axles and a working winch.



Turn the rear-mounted spare wheel to open the tailgate.



4-speed sequential gearbox and gear selector with 2 levers for engaging high or low gear.

EXPLORE THE PACKS

Primed. Packed. Prepared for anything. These adventure ready packs come with everything you need to complement your Land Rover Defender.

ADVENTURE PACK

- Seam Sealed Backpack
- Above and Beyond Microfibre Active Towel
- Above and Beyond Multi Tool
- Above and Beyond Flask



URBAN PACK

- Lerova Travel Wallet
- Above and Beyond Pen
- Above and Beyond Water Bottle
- Above and Beyond Bluetooth Speaker
- Above and Beyond Technical Keyring



EXPLORER PACK

- Above and Beyond Multi Tech Gloves
- Above and Beyond Functional Activity Belt
- Above and Beyond Multi Tool
- Above and Beyond Pen



COUNTRY PACK

- Weekender Bag
- Travel Mug Stainless Steel
- Premium Golf Umbrella



CLOTHING FEATURES GUIDE



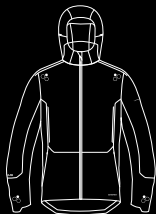
RODINIA HYBRID JACKET



TEPHRA GORE-TEX SHELL PARKA



WELDED THERMO JACKET



LITE GORE-TEX PACKABLE JACKET



REVERSIBLE BASE LAYER



CLOTHING SIZE GUIDE

UK MEN'S	CHEST (CM)
XS	79 - 84
S	86 - 91.5
M	94 - 99
L	101.5 - 106
XL	109 - 114
XXL	117 - 122
XXXL	125 - 130

UK WOMEN'S	BUST (CM)
8	78.5 - 81
10	82 - 86
12	87 - 91.5
14	92 - 96.5
16	97 - 101.5
18	102 - 106.5

Product availability and pricing are subject to change. All copy and images remain the copyright of Jaguar Land Rover. Correct at time of publication; subject to availability and market; Jaguar Land Rover reserve the right to remove or change specification of items in the range at any time.



Find us at:
shop.landrover.co.uk
Or visit your local retailer

Registered Office:
Abbey Road, Whitley, Coventry CV3 4LF
Registered in England No: 1672070.
VAT Registration No: GB927153228.